



DTCI

Program Management Review

5 November, 2008

United States District Court
For the District of Columbia
Civil Action No. 10-1482 (HLHK) ECF
Case: 1:10-cv-01482-HHK Document 20
Filed 09/12/11

Released under USTRANSCOM FOIA 09-70
FOIA Exemption (b)(4) Applies



MENLO DTCI 000644

Current State



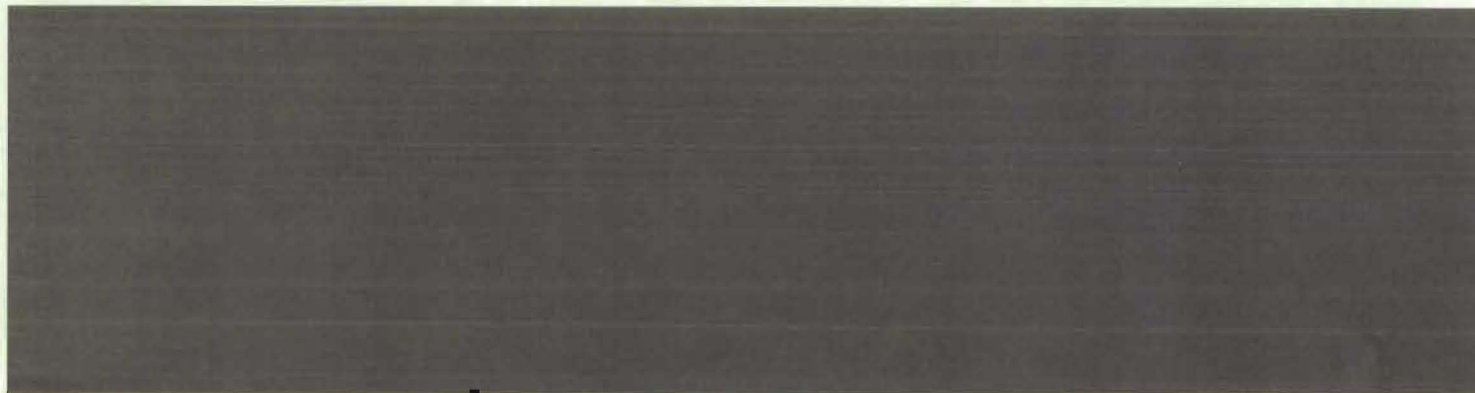
- **Schedule:**



(b)(4)

- **Savings & Small Biz continue to out pace goals**

- **Focus areas**



(b)
(4)



MENLO DTCI 000645



Implementation Roadmap



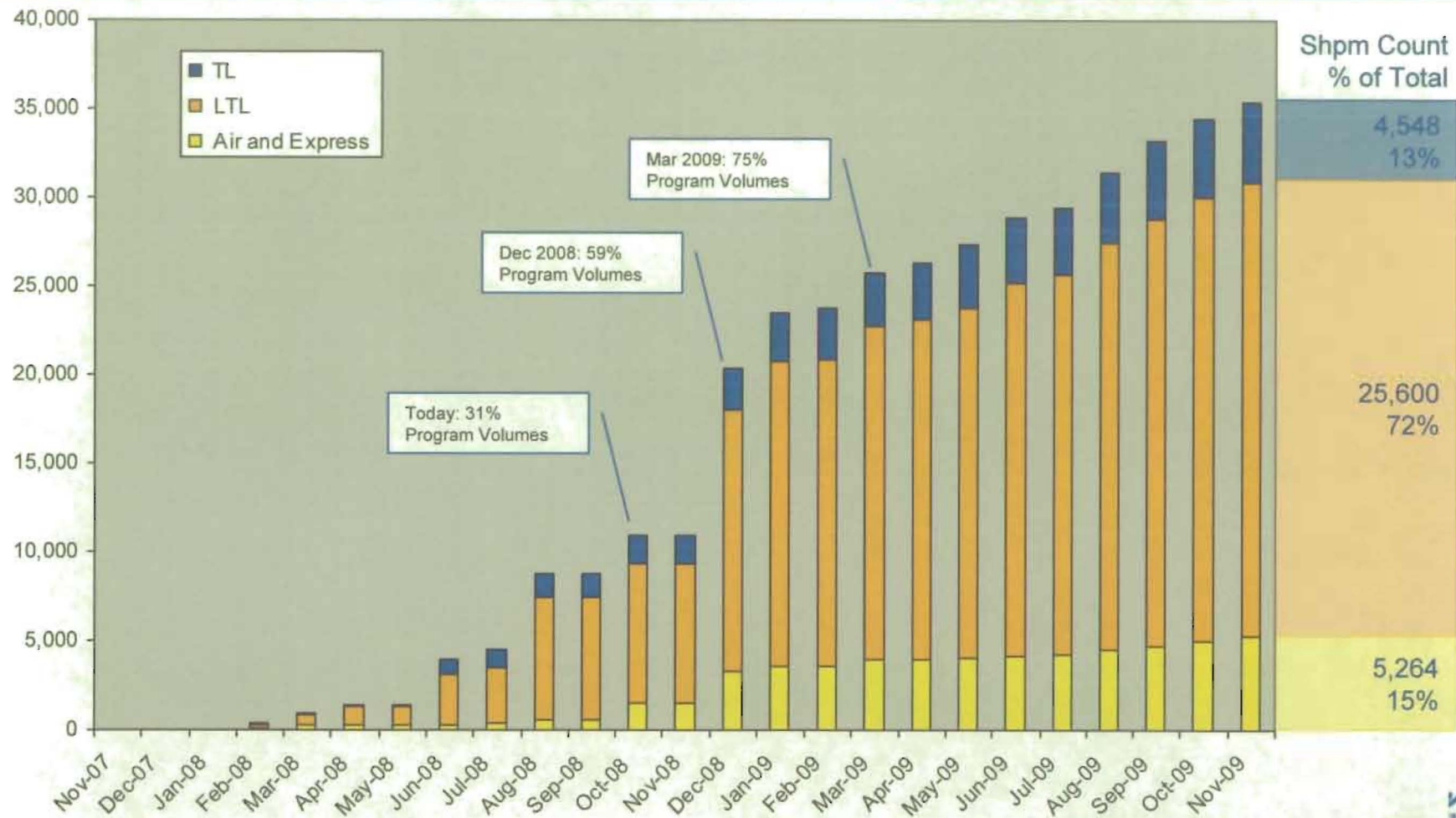
DLA Depot	Co-Located & Service Sites
Live	●
Next	●
Future	●

- Jun 2008 to present: All sites activated to desired schedule
 - Forecast same for balance of program



MENLO DTCI 000646

Program Volumes (Monthly Shipment Count)



* Includes shift of NAS Corpus from Sep 2008 to Jan 2009

MENLO DTCI 000647

Program to Date Performance



Target	Goal	APR	MAY	JUN	JUL	AUG	SEP	PTD	Status
1st 3 Sites by 15 April 2008	3	1	---	---	---	---	---	1	
Remaining Sites Implemented by Desired Date	4	---	---	1	1	1	1	4	
Carrier Bids - routing guides with carrier cost below NTE	>=0%	26%	29%	18%	18%	25%	34%	26%	
Small Business (as a % of purchased transportation)	>20%	58%	54%	52%	53%	55%	55%	54%	
OT Pick Up %	96%	92.7%	98.2%	92.2%	90.1%	93.7%	95.0%	93.5%	
OT Delivery %	96%	86.7%	91.4%	88.9%	90.1%	89.1%	87.0%	88.5%	
OS&D %	2%	0%	0%	0.03%	0.02%	0%	0%	0.01%	
Claims Cycle Time	---	---	---	---	---	---	---	---	
System Up Time - 6 month rolling average	99%	99.4%	99.6%	99.1%	99.1%	98.6%	98.6%	98.6%	
System Up Time - discrete monthly results	99%	99.4%	99.6%	97.9%	98.8%	95.5%	98.0%	98.6%	
Deliver Gross Freight Savings	19.10%	22%	29%	22%	18%	22%	19%	20%	

31MAR08 through 30SEP08

Program to date volumes

- 27 weeks of live operations
- Gross weight = 135.5MM lb.
- Shipment count = 26,926
- Freight spend = \$18MM



MENLO DTCI 000648



Implementation

MENLO DTCI 000649

Implementation - Schedule



- **All sites live on or before desired dates**
- **October**
 - DDOO, Keyport & Silverdale – 14th
 - NAS Whidbey Island, FISC Everett, WA – 20th
 - Ft. Lewis & Camp Murray – 27th
- **November**
 - DDHU – 10th
 - SPAWAR, FISC North Island – 17th
- **December**
 - DDSP – 8th
- **January**
 - NAS Corpus, Kingsville – 12th
 - DDNV – 20th



Implementation - Phase II



- Six sites live on GFM before required dates

(b)
(c)

- Requirements

(b)
(c)

- Testing

(b)
(c)

- Training

(b)(c)

- Go-live support

(b)(c)

very
BEST

Menlo
SOLUTIONS

Con-way
TECHNOLOGIES

MENLO DTCI 000651

Implementation – DDSP Preparations



- Requirements

[Redacted]

(b)(4)

- Testing

[Redacted]

(b)(4)

- Training

[Redacted]

(b)(4)

- Go-Live Support

[Redacted]

(b)(4)



Information Technology

MENLO DTCI 000653

Information Technology – System Availability

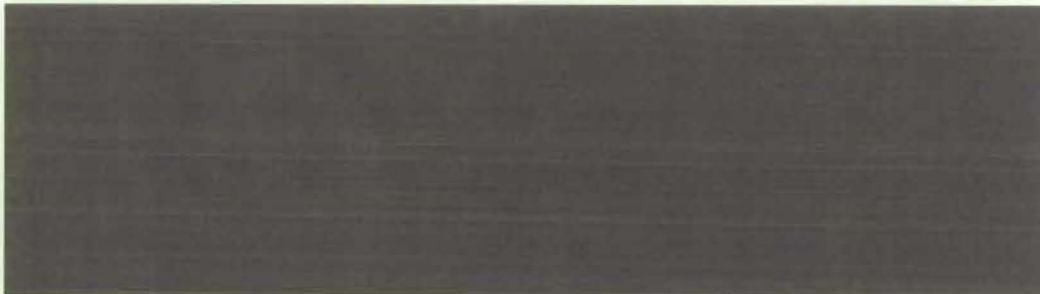


- Application patches



(b)(4)

- Connectivity



(b)(4)

- TMS database



(b)(4)

Con-way

Menlo
Con-way

Information Technology - ATO



- IATO [REDACTED] (b)(4)
- MITRE testing in August



(b)
(4)

- Additional application testing week of 20 October



(b)(4)

Information Technology - GFM



- Business rules for changes, cancellations



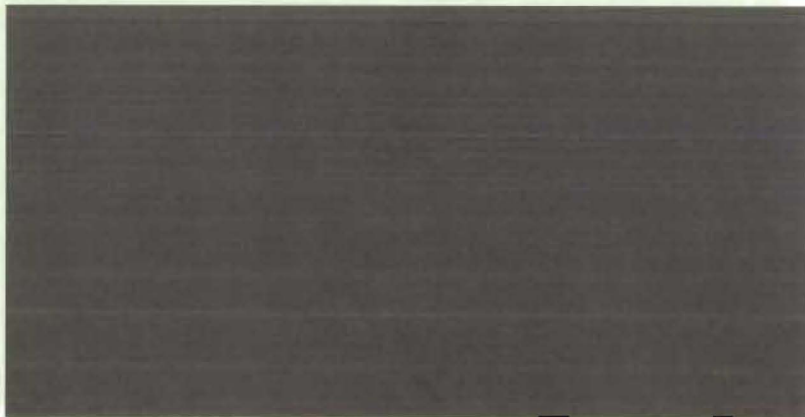
(b)(4)

- Locations without DODAACs



(b)(4)

- Mapping issues



(b)(4)



Information Technology – DSS 9.x



- DSS call to TMS

[REDACTED]

(b)(4)

- Acquiring mode

[REDACTED]

(b)(4)

- Acquiring carrier

[REDACTED]

(b)(4)



Contracting

MENLO DTCI 000658

Contract, Audit, Payment Status

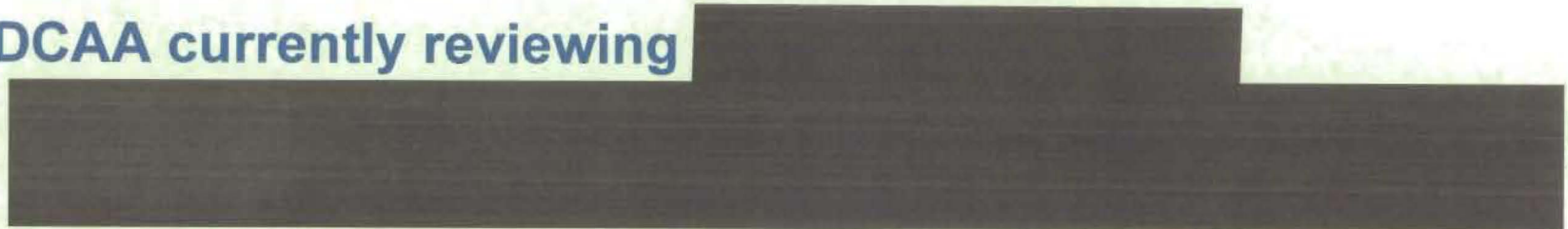


- Contract Mod P00005



(b)
(4)

- DCAA currently reviewing



(b)
(4)

Small Business Subcontracting Goals



- **Overall Purchased Transportation Thru 30 Sep**

- Goal – 20% Actual – [REDACTED] (b)(4)

- **Total Small Business**

- Goal – 20% Actual – [REDACTED] (b)(4)

- **Subcategories from Small Business Plan**

	Goal	Actual/Purchased	Actual/Total	
• WOSB	1.7%	<div></div>		(b) (4)
• VOSB	1.6%			
• SDVOSB	1.6%			
• SDB	5.5%			
• HUBZone	1.2%			



Metrics & Operations

MENLO DTCI 000661

Program to Date Performance



Target	Goal	APR	MAY	JUN	JUL	AUG	SEP	PTD	Status
1st 3 Sites by 15 April 2008	3	1	—	—	—	—	—	1	
Remaining Sites Implemented by Desired Date	4	—	—	1	1	1	1	4	
Carrier Bids - routing guides with carrier cost below NTE	>=0%	26%	29%	18%	18%	25%	34%	26%	
Small Business (as a % of purchased transportation)	>20%	58%	54%	52%	53%	55%	55%	54%	
OT Pick Up %	96%	92.7%	98.2%	92.2%	90.1%	93.7%	95.0%	93.5%	
OT Delivery %	96%	86.7%	91.4%	88.9%	90.1%	89.1%	87.0%	88.5%	
OS&D %	2%	0%	0%	0.03%	0.02%	0%	0%	0.01%	
Claims Cycle Time	—	—	—	—	—	—	—	—	
System Up Time - 6 month rolling average	99%	99.4%	99.6%	99.1%	99.1%	98.6%	98.6%	98.6%	
System Up Time - discrete monthly results	99%	99.4%	99.6%	97.9%	98.8%	95.5%	98.0%	98.6%	
Deliver Gross Freight Savings	19.10%	22%	29%	22%	18%	22%	19%	20%	

31MAR08 through 30SEP08

Program to date volumes

- 27 weeks of live operations
- Gross weight = 135.5MM
- Shipment count = 26,926
- Freight spend = \$18MM



MENLO DTCI 000662

Actual vs. Expected Shipment Volumes



(b) (5)

[REDACTED]

(b) (5)

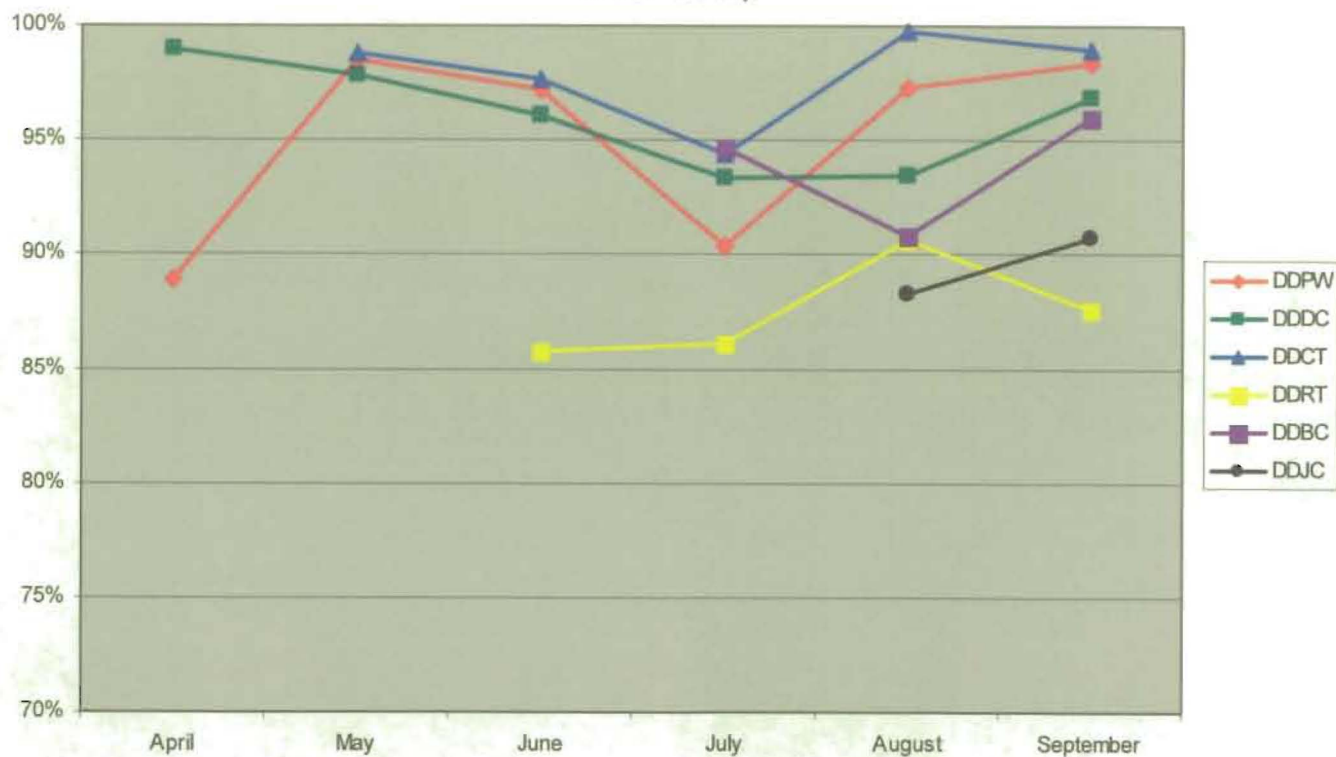
[REDACTED]

way
MENLO
Con-way
MENLO DTCI 000663

On Time Pick Up



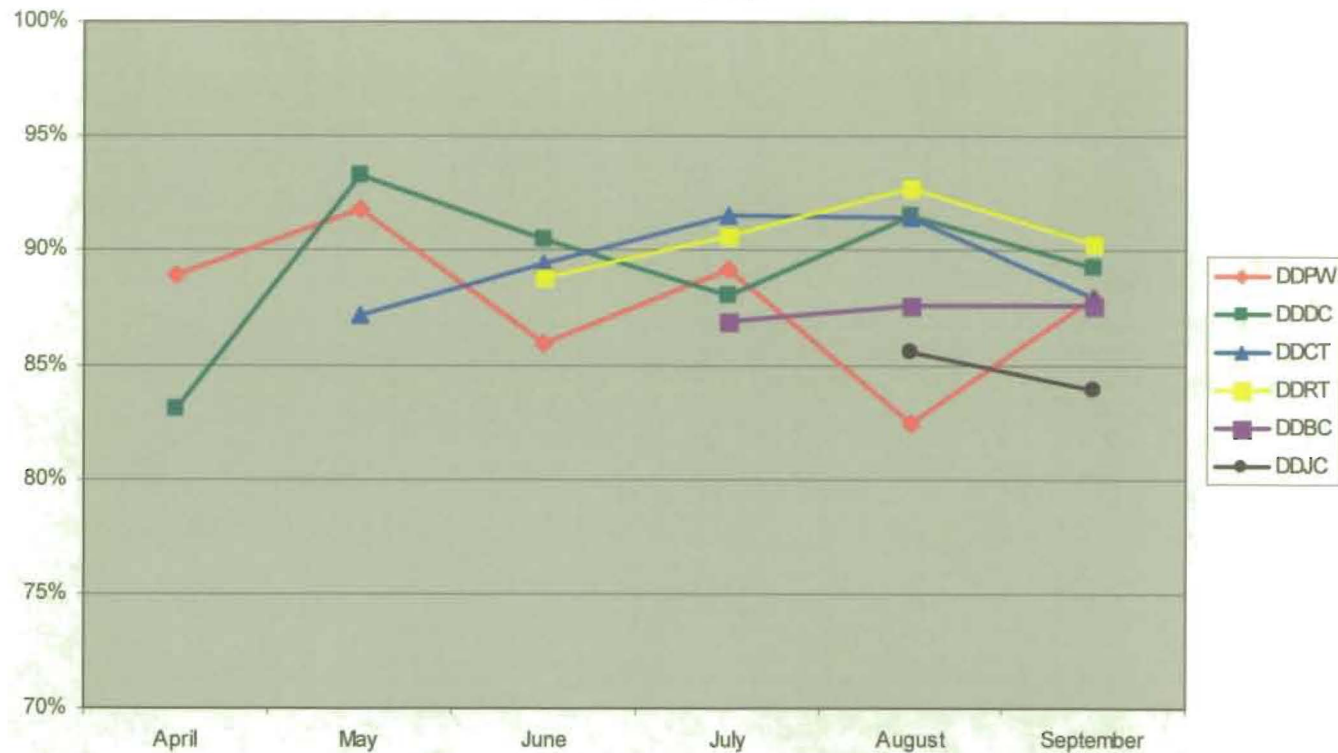
On Time Pick Up Performance
31 Mar - 30 Sep



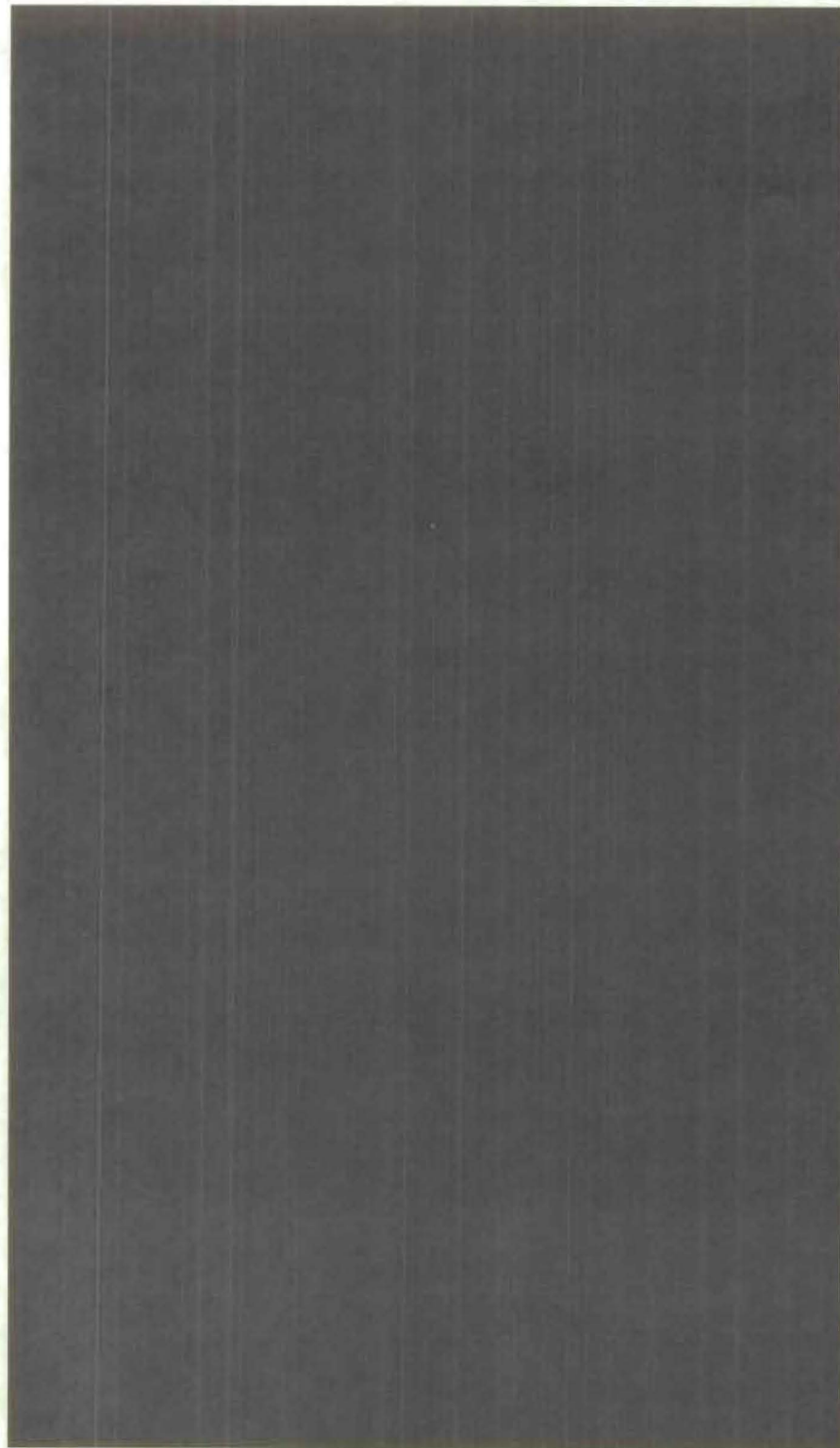
On Time Delivery



On Time Delivery Performance
31 Mar - 30 Sep



Gross Freight Savings



(b) (7)

way
WALSH

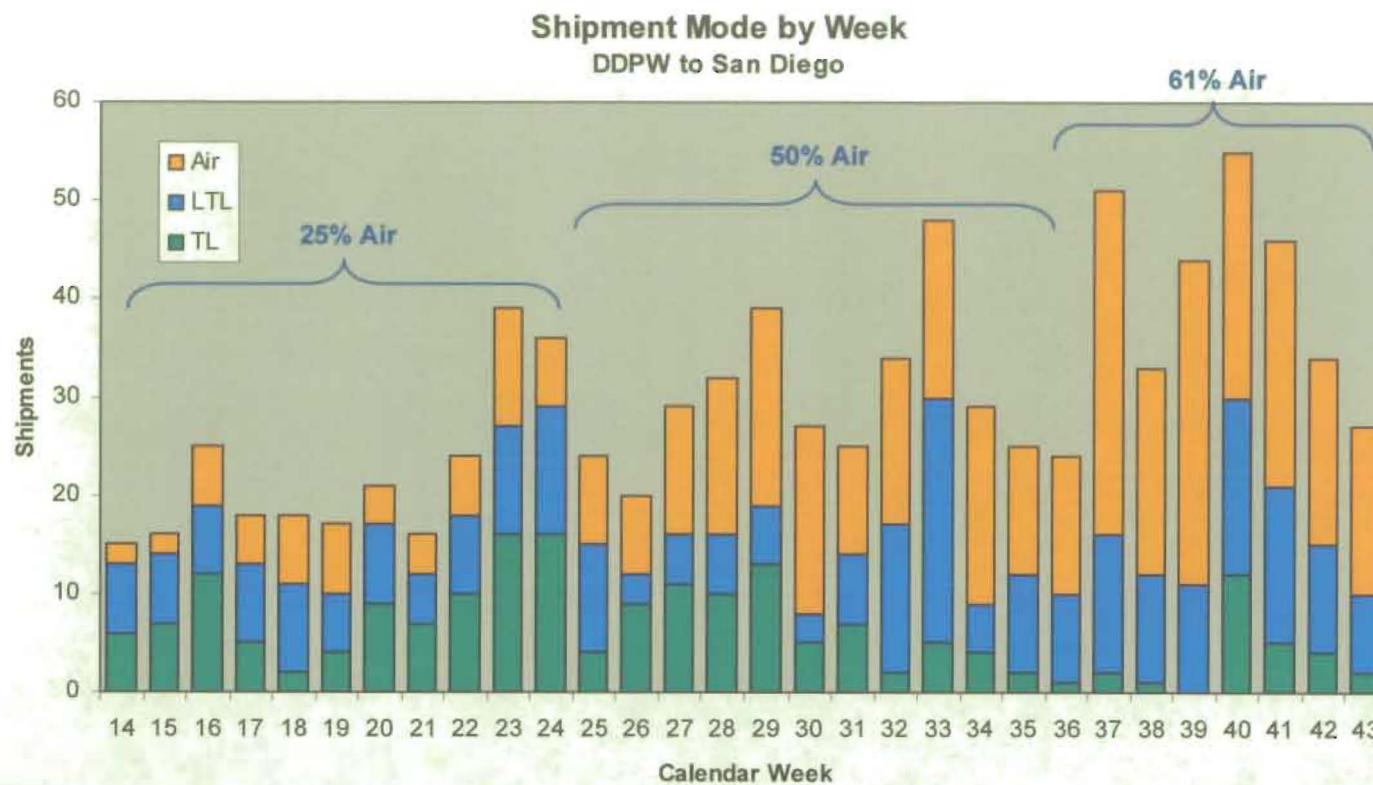
Menlo
MANAGEMENT SERVICES

Con-way
Freight Services

Con-way

MENLO DTCI 000666

DDPW Savings Decrease



[Redacted]

(b)(4)
(b)(4)

Con-way

vay
Menlo
WORLDWIDE LOGISTICS
Con-way
TRUCKLOAD

Quality Assurance Plan



- Updating QA Plan for release in November
- Increased sampling frequency



(b)(4)

- Verification of measurement systems



(b)
(4)

- Weekly measurement system analysis



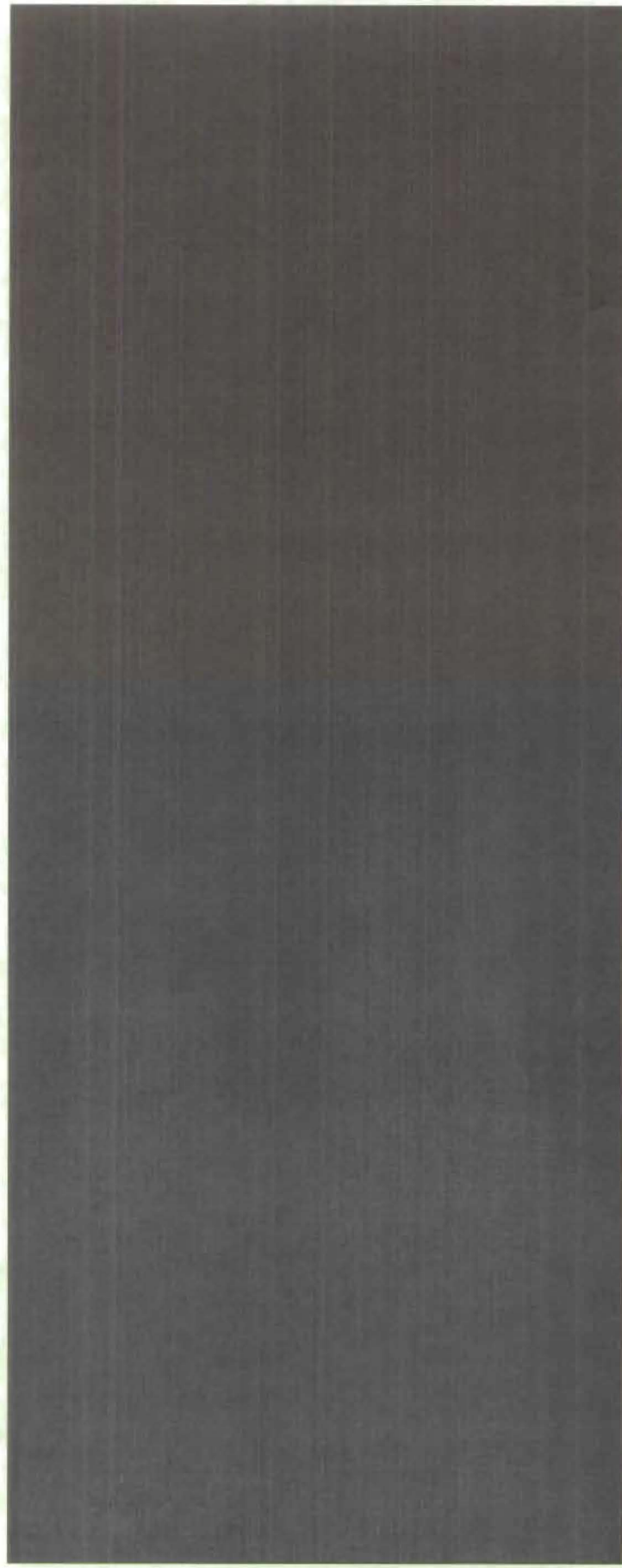
(b)(4)



QA Testing



- Examples of QA Tests



(S) (F)

way
SOLUTIONS

Menlo
SOLUTIONS

Con-way
SOLUTIONS

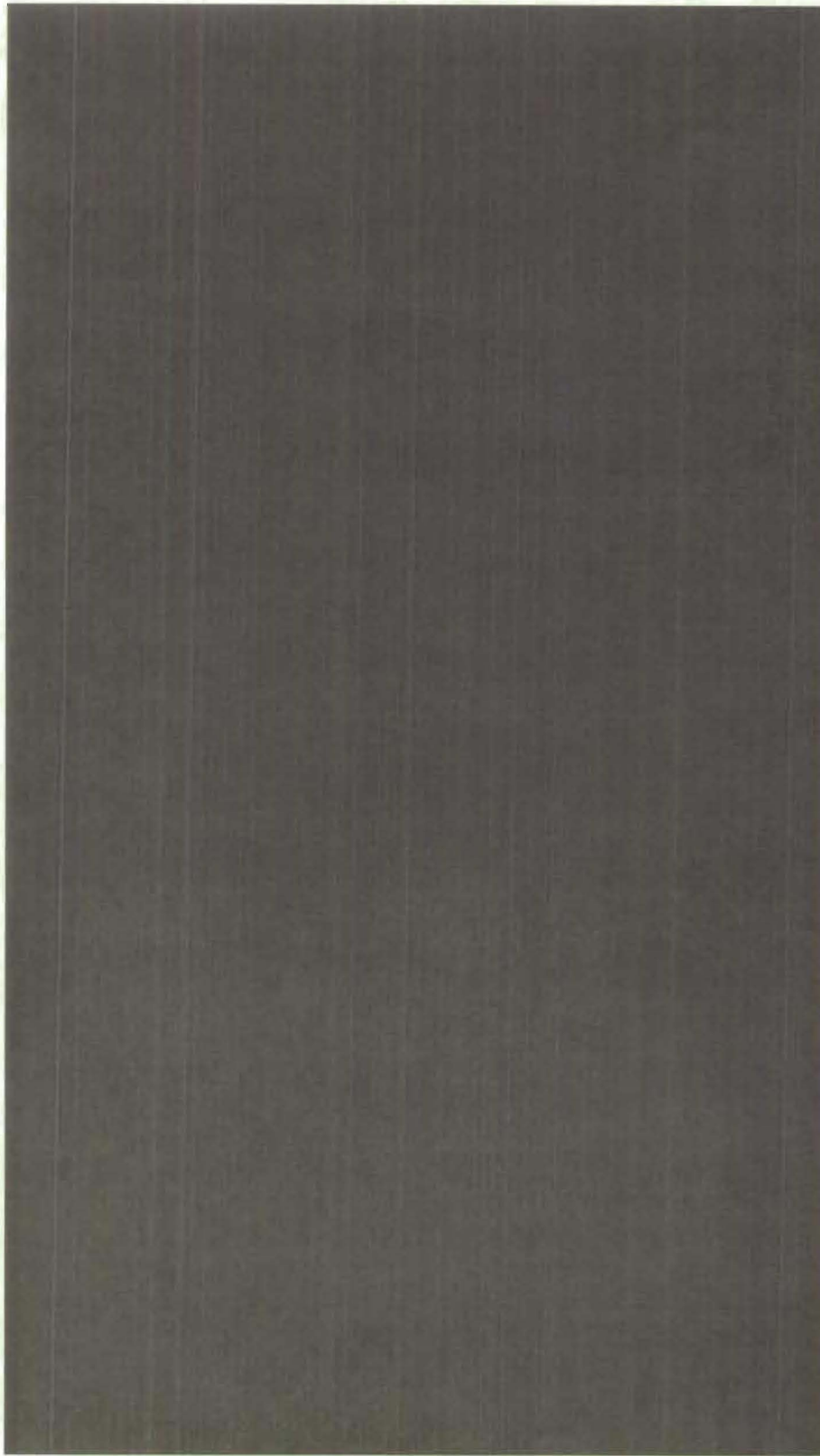
Con-way

MENLO DTCI 000669

Incident / Issues



- Air Service – DDPW



cb)(4)

way
TRUCKING

Menlo
INSURANCE SERVICES

Con-way
TRUCKING

Con-way

MENLO DTCI 000670

Incidents / Issues



- Accident Reporting



(b)(4)

