



UNCLAS

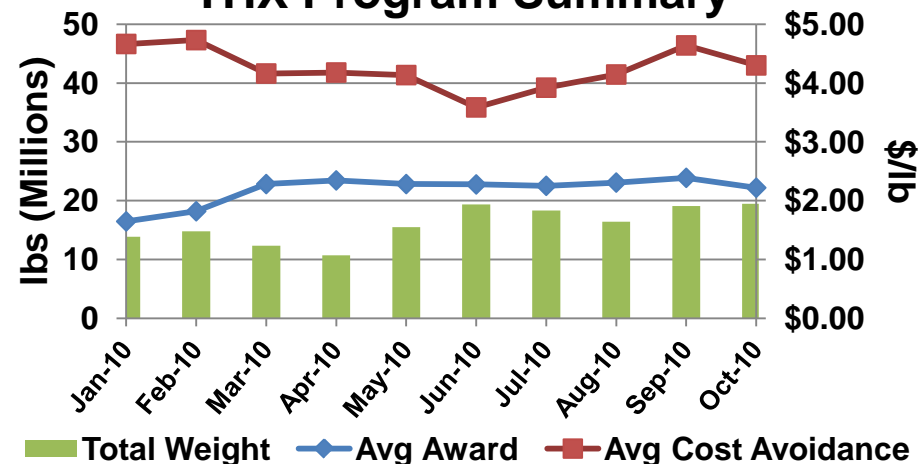


Theater Express (THX) Program

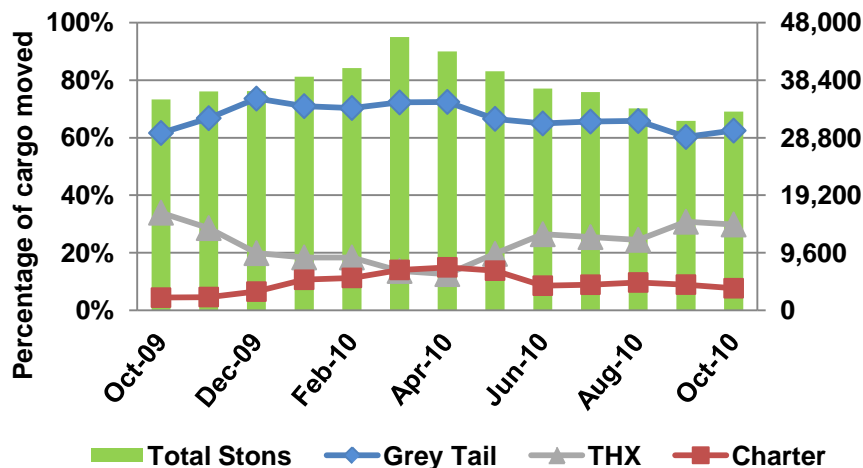
■ In October, the THX Program:

- Awarded \$43.2M in tenders to move 9.7K STONs and achieved \$83.7M in cost avoidance
- Represented 30% of all AMD scheduled intra-theater airlift
- THX regional cargo distribution increased to 80% and 15% for OEF/OIF respectively.

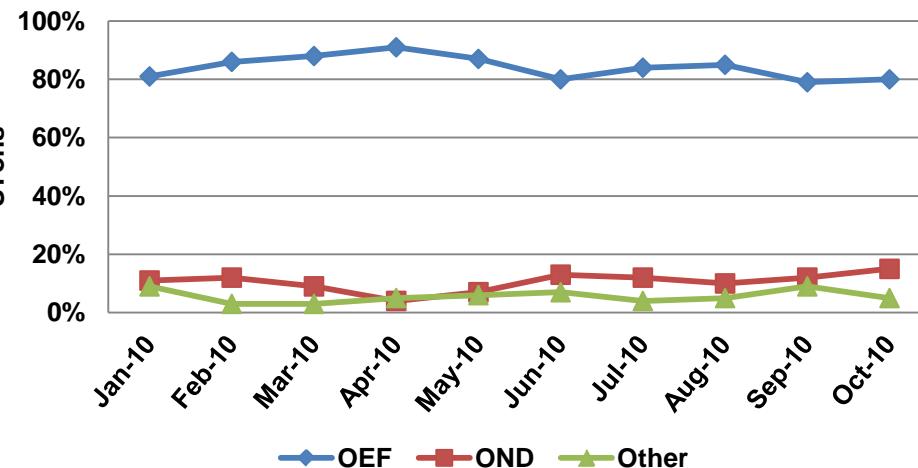
THX Program Summary



Theater Cargo Moved



THX Regional Market Share

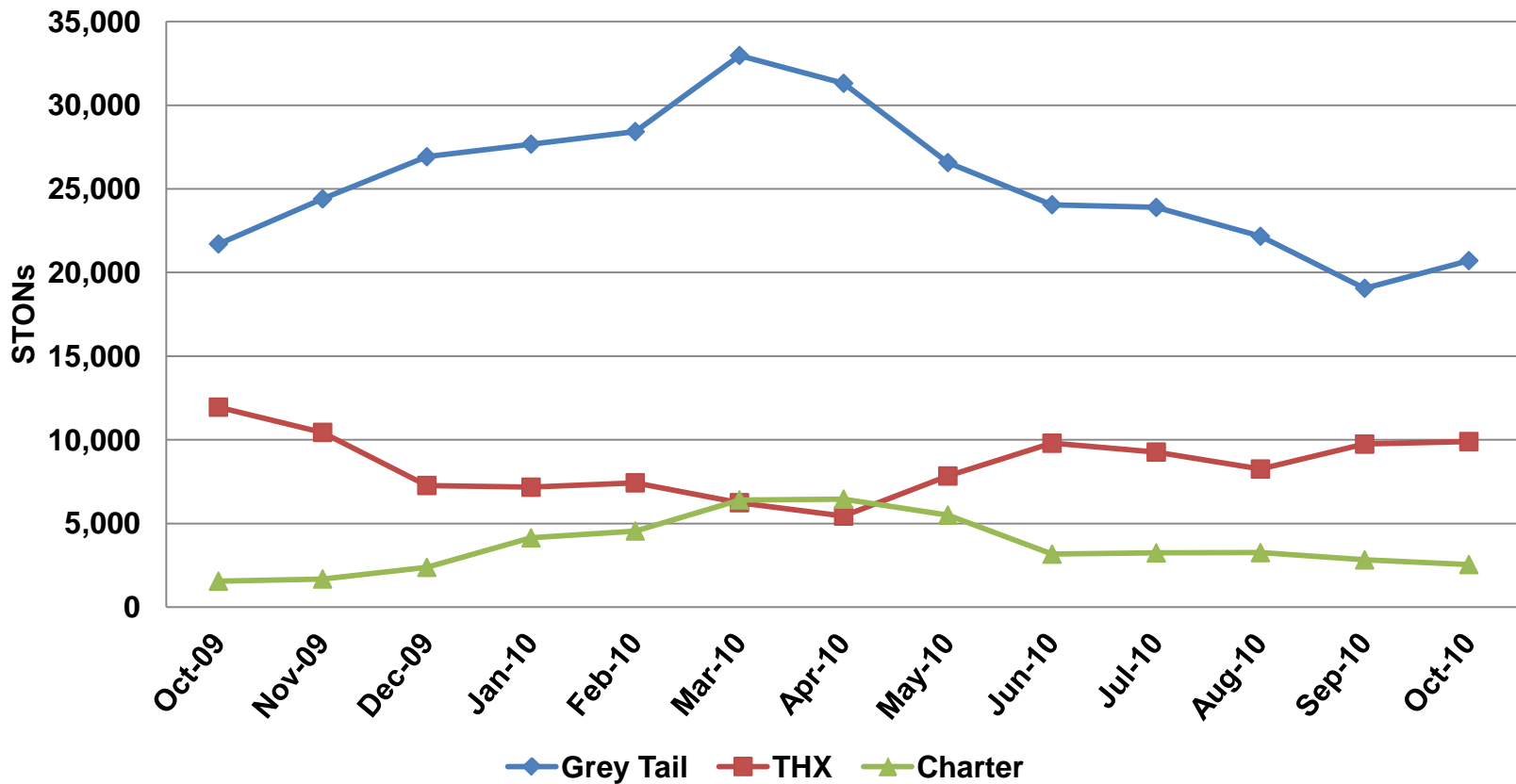




UNCLAS



Cargo Movement History



Sorties	Oct-09	Nov-09	Dec-09	Jan-10	Feb-10	Mar-10	Apr-10	May-10	Jun-10	Jul-10	Aug-10	Sep-10	Oct-10
Grey Tail	4,164	4,468	4,780	4,902	4,519	5,600	5,522	5,460	5,176	5,634	5,556	5,027	5,464
Charter	61	71	84	122	149	180	139	108	85	154	230	117	101
C-17	1,239	1,355	1,480	1,508	1,239	1,632	1,482	1,400	1,353	1,524	1,349	1,082	1,316
C-130	2,923	3,109	3,294	3,389	3,278	3,967	4,040	4,060	3,823	4,110	3,977	3,945	4,148



UNCLAS



THX Daily Pallets

